

WINE

ENTHUSIAST

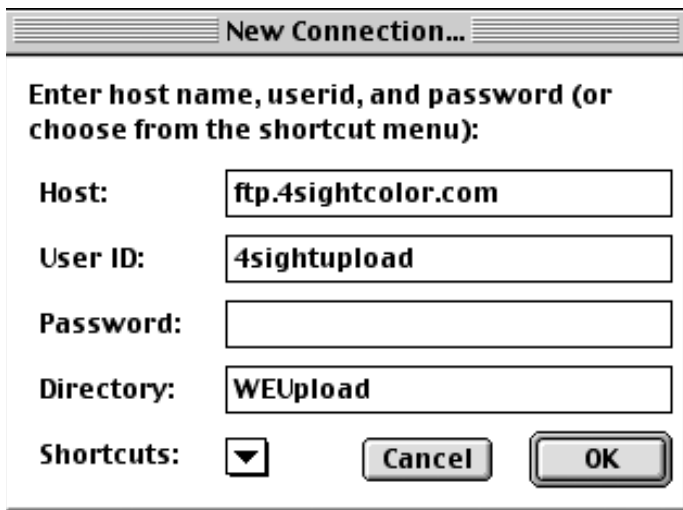
M A G A Z I N E

FTP Instructions

Using Fetch

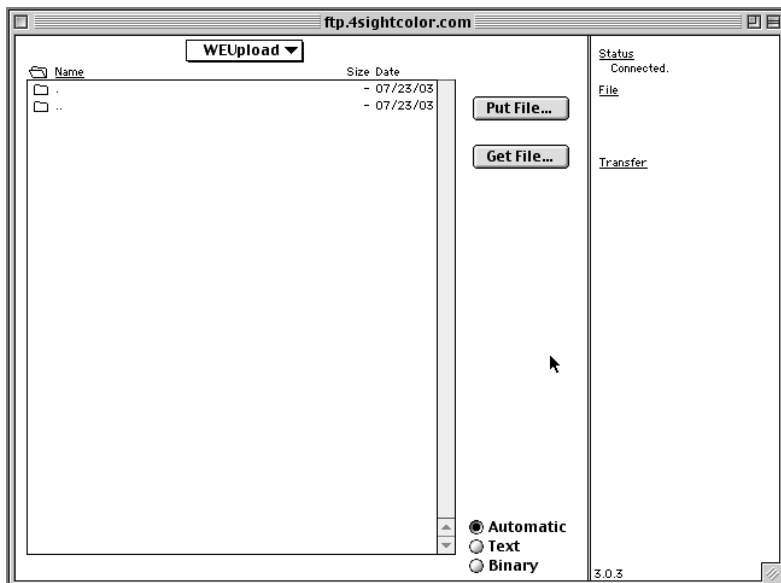
UPLOADING FILES

1. Launch Fetch application
2. A pop-up menu will appear (*Fig. 1*)
Type in the information as shown
The password is “access” (this is case sensitive)



[Fig.1]

3. Click the OK button
4. A pop-up menu will appear (*Fig.2*)



[Fig.2]

use this box to select and transfer file

5. Click on the “Put File” button, select file to be transferred
(please create an .sea or .sit stuffed file prior to rreansfer - this will help eliminate corrupt files)
6. The transfer clock will show the progress, once stopped your files will be posted.